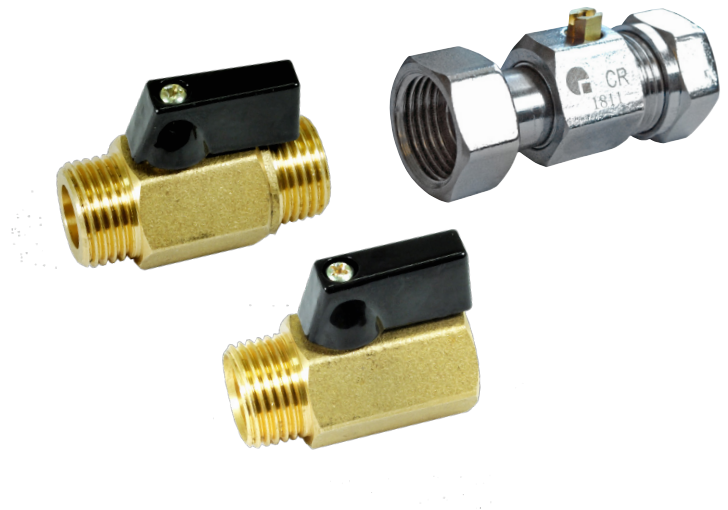


Mini ball valve

- Brass or dezincification resistant brass
- Male thread 1/2"
- Male and female thread 1/2"
- Male thread and nut 3/4"
- Nut 1/2" and 15CU compression fitting



Description

Ball valve.

Construction

Ball valve in brass or dezincification resistant brass.

Model 1602

Brass with connection male thread 1/2". Gaskets in NBR. Handle in aluminium.

Model 1605

Brass with connection male thread 1/2" and female thread 1/2". Gaskets in NBR. Handle in aluminium.

Model 1656

Brass with connection male thread 3/4" and moving nut 3/4". Gasket in EPDM. Screw driver slot for opening and closing valve.

Model 1751

Dezincification resistant brass, connection moving nut 1/2" and compression fitting 15CU. Gasket in EPDM. Screw driver slot for opening and closing valve.

Maintenance

The ball valve must be operated periodically, two to three times a year.

Marking

CR and company logotype.

Technical data

Modell 1602 and 1605

Body	Brass CW617N
Ball seal	PTFE
Stem gaskets	NBR/NBR

Model 1656 and 1751

Body	Dezincification resistant brass chrome-plated CW625N
Ball seal	EPDM
Stem gasket	EPDM

Maximum working pressure: 16 bar

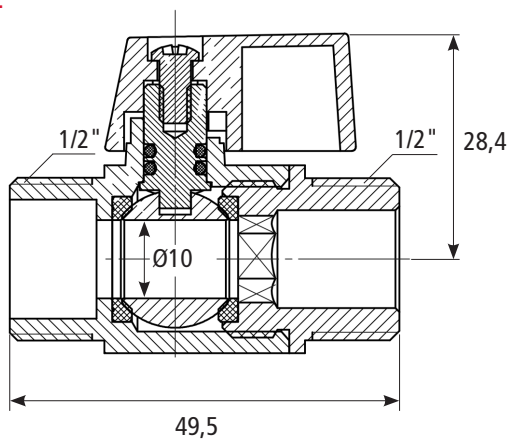
Maximum working temperature: +90°C

Minimum working temperature: +2°C

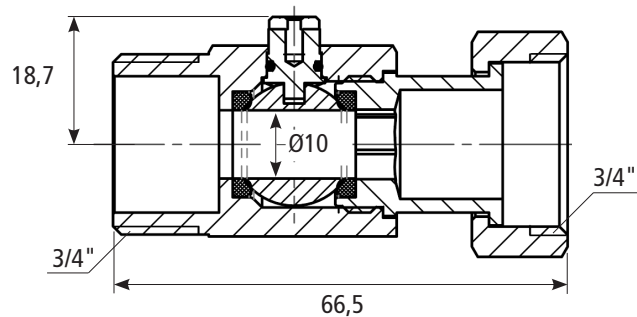
Subject to technical changes and corrections without notice

Mini ball valve

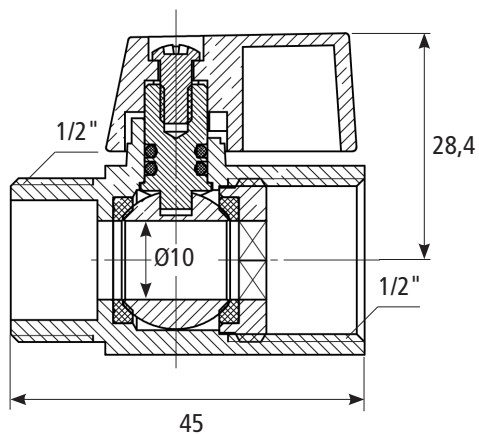
1602



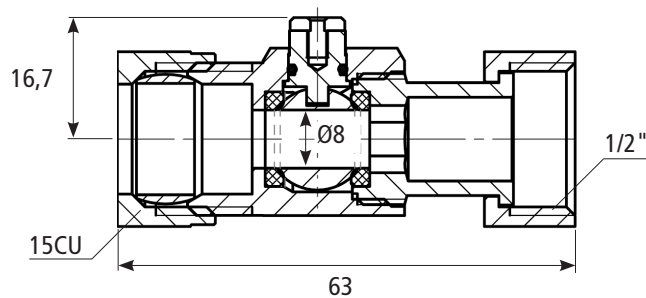
1656



1605



1751



Item number	Description	Connection thread	Length L	Centrum height H	Bore Ø	Weight (kg per piece)
0416021501	Miniball valve 1602-15, 1/2"M, handle	1/2"M	49,5	28,4	10	0,12
0416051501	Miniball valve 1605-15, 1/2"M x 1/2"F, handle	1/2"F x 1/2"M	45	28,4	10	0,11
0416560020	Miniball valve 1656-20, 3/4"M x 3/4" rotating nut, screw slot	3/4"F x 3/4"M	66,5	18,7	10	0,19
0417511501	Miniball valve 1751-15, 15CU x 1/2"F rotating nut, screw slot	15CU x 1/2"F	63	16,7	8	0,13

All dimensions in millimetres

Subject to technical changes and corrections without notice